

1082

ASME B40.1

: 4 1/2, 6 8 1/2
: 3A (0,25 %)

MicroSpan™

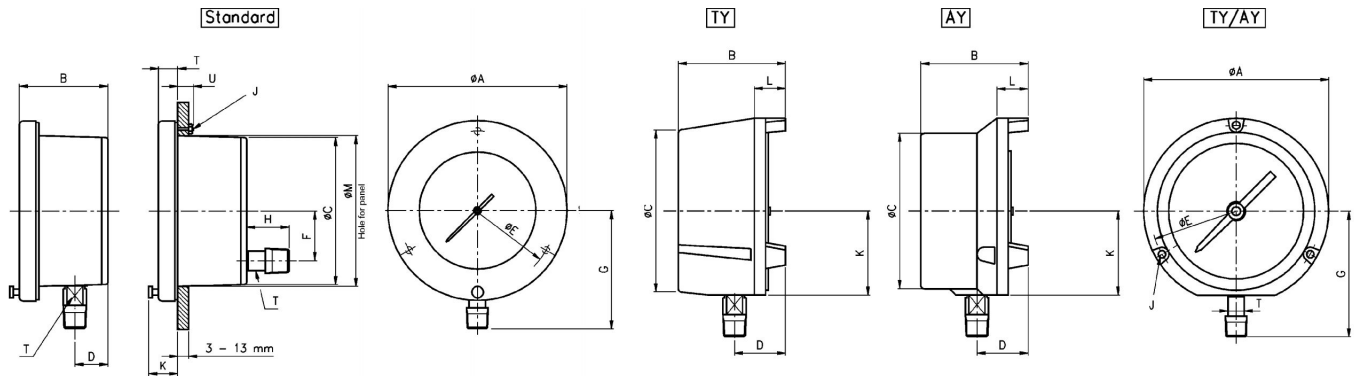
130 %

-1 ... 0 0 ... 700
-30 " 0 psi 0 ... 10.000 psi



		1082																
		TY				AY												
()		4 1/2	6	8 1/2	4 1/2	4 1/2	6											6
()		1	1,6	2,5	4	6	10	16	25	40	60	100	160	250	400	600	700	
		1/0	-1/0,6	-1/1,5	-1/3	-1/5	-1/9	130 % ()										
		1/4 NPT (), 1/2 NPT (ANSI/ASME B1.20.1) 9/16-18 UNF-2B Aminco G 1/4 B male, G 1/2 B, M20x1,5																
		(.25)	(.25)	(.)	()											(.)		
		400																
		3A (0,25 % F.S.)																
		-25 ... 60 °C . 100 °C -40 ... 65 °C																
		. 0,09 % / 10 K																
	EN 60 529/IEC 529	IP54																
(/ .)		1,1	1,4	2	1,6	1,1	1,4											

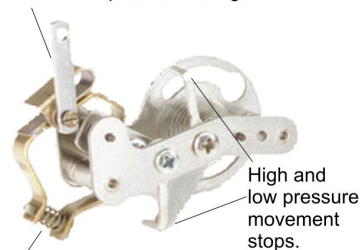
()



Type	Dial	A	B	C	D	E	F	G	H		J	K	L	M	T	U	
									Max/Min								
Standard	4 1/2"	155	73	121	30	137	41	100	35	#10-24	124	16	19				
	6"	192	73	121	30	178	41	114	35	1/4-20	165	16	19				
	8 1/2"	257	73	121	30	244	41	152	35	1/4-20	229	16	19				
TY	4 1/2"	148	86	129	-	137	-	94	-	6	67	24	-	16	-	-	-
	6"	148	87	124	41	137	-	94	-	6	67	27	-	16	-	-	-
AY	4 1/2"	148	87	124	41	137	-	94	-	6	67	27	-	16	-	-	-
	6"	194	89	162	41	178	-	113	-	6	67	27	-	16	-	-	-

Rev. F

Temperature compensation reduces temperature-caused errors to less than 0,09 % / 10 K temperature change.



The Micro-Span™ adjustment permits precise adjustments to achieve zero error in calibration at zero and 100 % of scale

(45)	(A)	(04) 1/2 NPT	(L)	-1/ 0	()	(AY)	(NH)
4 1/2	(P) 400,	(02) 1/4 NPT ¹⁾	(B) 1)	-1/ 1,5		(Ø 4 1/2" Ø 6"	
(115)		(09) 9/16-18 UNF-2B Aminco		-1/ 3)	(6B)
(60)				-1/ 5		(TY) (Ø 4 1/2"	
6				-1/ 9)	(PD)
(150) ¹⁾				0/ 1			(SG)
(85)				0/ 1,6			
8 1/2				0/ 2,5			
(215) ²⁾				0/ 4			
				0/ 6			
				0/ 10			
				0/ 16			
				0/ 25			(1278M)
				0/ 40			(Ø 4 1/2" Ø
				0/ 60			6" TY AY)
				0/100			
				0/160			
				0/250			
				0/400			
				0/600			
				0/700			
1) TY		1)	1) TY AY				
2)							

45 | 1082 | P | | 02 | L | 0/16 | BAR | = | NH