

**T5500 T6500**



EN 837-1  
100 160  
: 1 (EN) (1%)

4X) IP66/IP67 (NEMA  
ATEX  
CE II 2 GD c  
130 %  
(PLUS!)  
316L

-1 ... 0 0 ... 1000  
-30 . . . . . 0 psi 0 ...  
15.000 psi

T5500,  
T6500,  
: 1% (  
: 0.5% (  
: 100 160  
: : 304  
: : 316

T5500:  
T6500:

304/303  
316L  
: ¼ NPT ., ½ NPT  
: G ¼ B ., G ½ B  
T5500:  
T6500:  
ATEX:  
RL 2014/34/EU . X

CE II 2 GD c IIC Tx  
File No. 35134585 at notified  
body 0044, TÜV NORD CERT  
( )

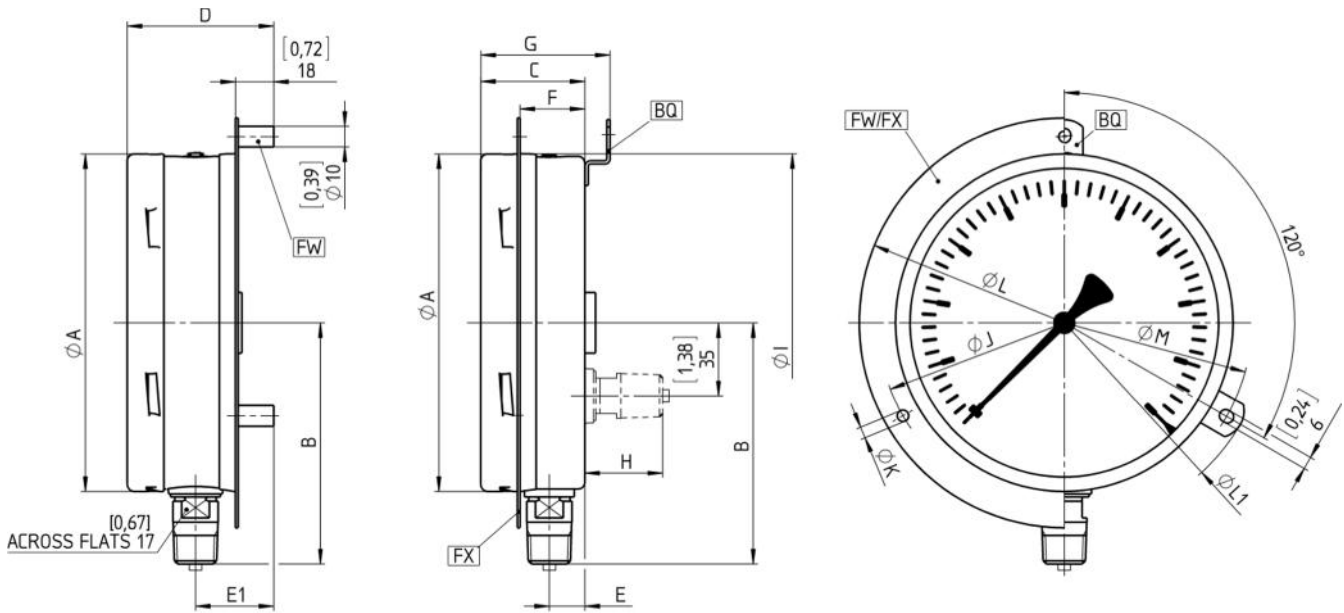
IP66 (NEMA 4X):  
IP67 & IP66 (NEMA 4X):

: -40 ... 70 °C  
-25 ... 60 °C (ATEX)  
: . 200°C  
: . 100°C  
: -40 ... 70 °C  
-25 ... 60 °C (ATEX)  
: . 0.4 % /10  
K

(100/160 ): T5500: 0,9 - 1,2 ( . )  
1,2 - 2,0 ( . )  
T6500: 0,9 - 1,2 ( . )  
1,2 - 2,0 ( . )

PLUS!™: LL  
SG  
: PD  
: SH  
: EP  
: . . . . T5500-KF  
: . . . . T55E

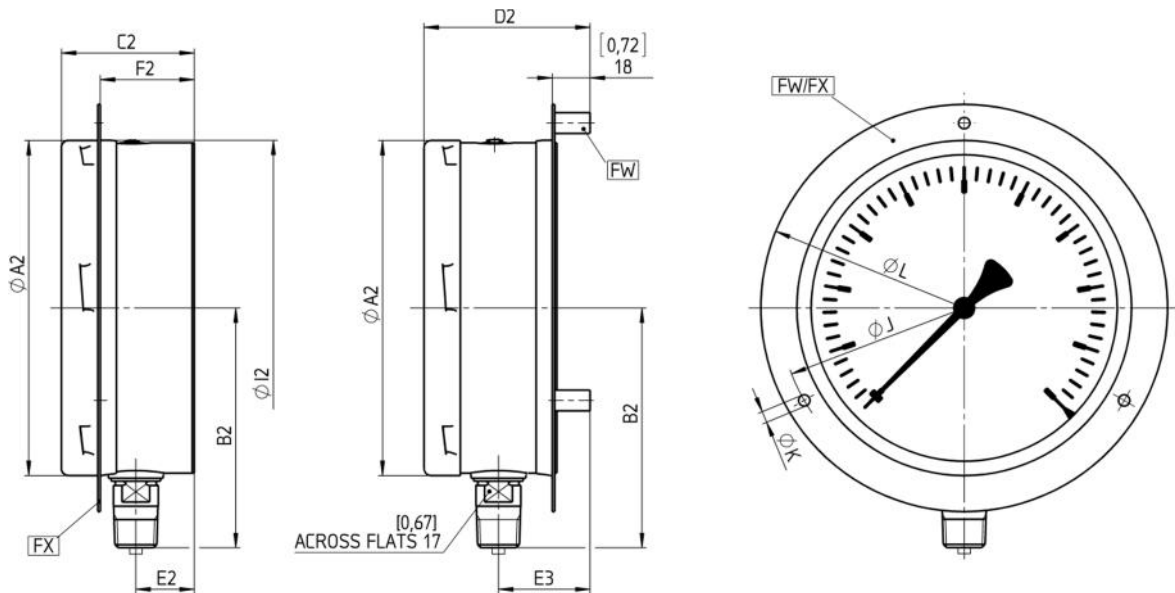
**T5500**



NG	A	B	C	D	E	E1	F	G	H	I	J	K	L	L1	M
100 mm	[3,97] 101	[3,36] 85	[2,01] 51	[2,72] 69	[0,73] 18,5	[1,44] 36,5	[1,26] 32	[2,48] 63	[1,38] 35	[4,00] 102	[4,57] 116	[0,19] 4,8	[5,20] 132	[5,28] 134	[4,69] 119
160 mm	[6,35] 161	[4,54] 115	[1,96] 50	[2,76] 70	[0,67] 17	[1,47] 37	[1,22] 31	[2,43] 62	[1,46] 37	[6,36] 162	[7,01] 178	[0,22] 5,5	[7,72] 196	[7,64] 194	[7,05] 179

Rev. M

**T6500**



NG	A2	B2	C2	D2	E2	E3	F2	I2	J	K	L
100 mm	[3,97] 101	[3,36] 85	[2,38] 61	[2,91] 74	[1,02] 26	[1,55] 39	[1,63] 42	[4,00] 102	[4,57] 116	[0,19] 4,8	[5,20] 132
160 mm	[6,35] 161	[4,54] 115	[2,52] 64	[3,15] 80	[1,11] 28	[1,74] 44	[1,78] 45	[6,36] 162	[7,01] 178	[0,22] 5,5	[7,72] 196

Rev. M

(100) 100	T5500	(S) 316L (1.4404) TM1000	(D)	(04) 1/2 NPT (1)	(L) ( )	-1/ 0 <sup>1)</sup> -1/ 1,5 -1/ 3 -1/ 5 -1/ 9 -1/ 15 -1/ 24	(BAR) (=) (MPA) (KPA) (KG/CM2)	(GV)	(NH) (CS) (DA) (TU) (6B)
(160) 160	T6500	(P) TM1000	(L)	(02) 1/4 NPT (1)	(B) ( ) <sup>1)</sup>	0/ 0,6 <sup>2)</sup> 0/ 1 <sup>1)</sup> 0/ 1,6 0/ 2,5 0/ 4 0/ 6 0/ 10 0/ 16 0/ 25 0/ 40 0/ 60 0/ 100 0/ 160 0/ 250 0/ 400 0/ 600 0/1000	(GV3) 3 cst (GR) (GX) <sup>1)</sup> (LJ) (D) (YW) 316L (1.4404)	(EN 837-1) T5500 (6W) (MP) (PD) (SG) (BQ) (FX) (FW) U- (UF) ( T6500) (AJ) ( 0,5 % (LL) <4 ( ) (NZ) (PR) ( L) (OS) (VS) (ATEX) ATEX (C3) DIN EN 10204 3.1 (C4) (HY) 130% (MQ) PMI (MO) -	
					1) T5500	psi and others on request		1) LL	

100 T5500 S D 15 L 0/16 BAR YW NH